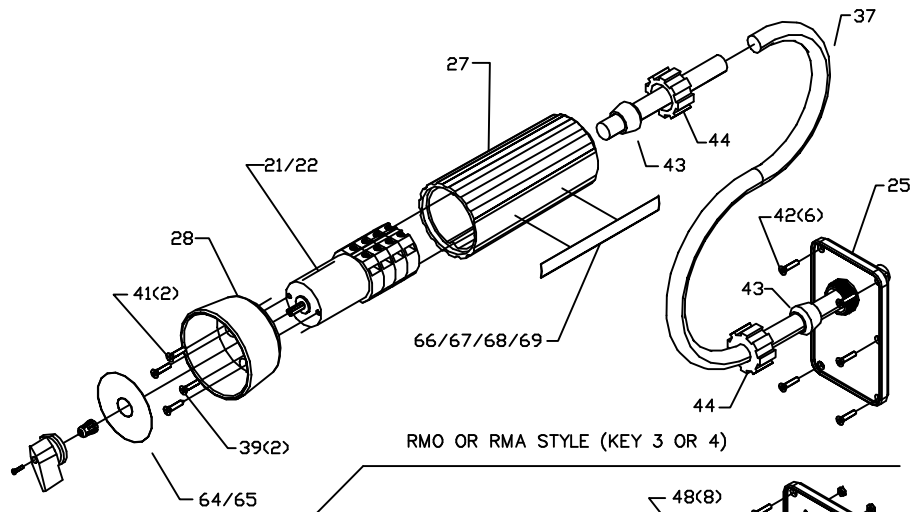


SMO OR SMA STYLE

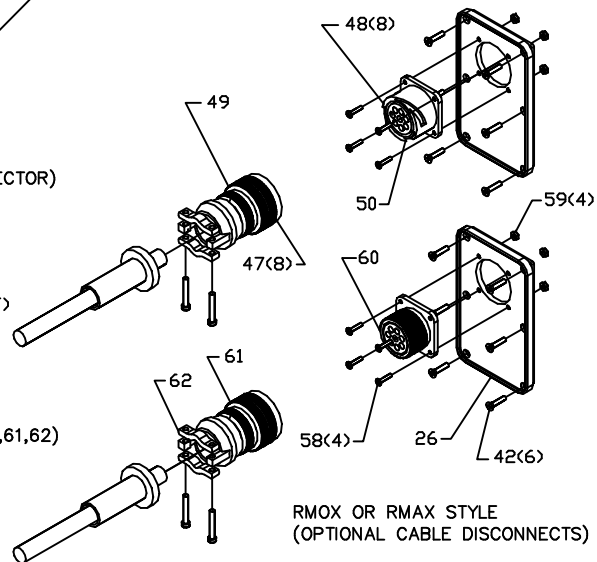


RMO OR RMA STYLE (KEY 3 OR 4)

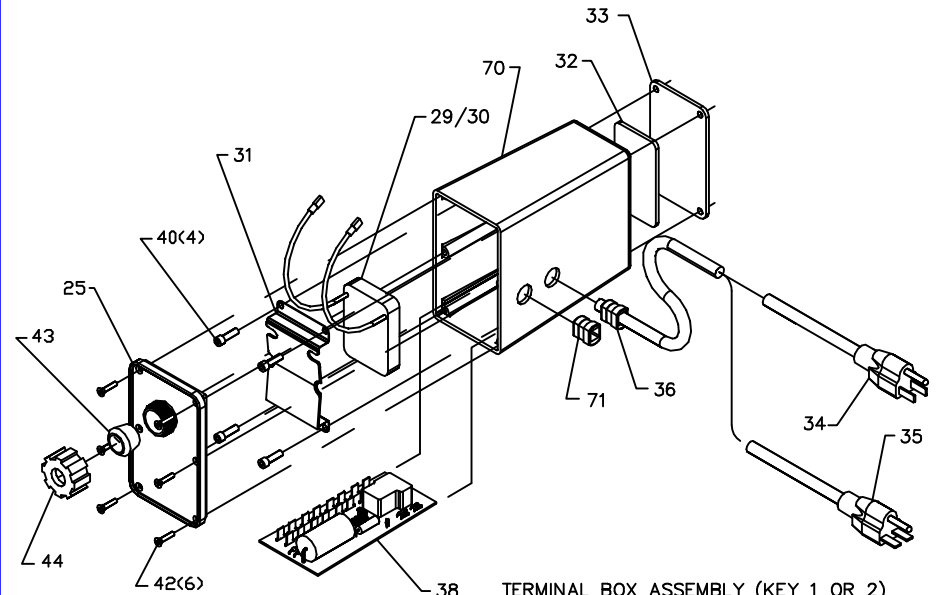
BAYONET (1/4 TURN CONNECTOR)
(KEY ITEM 55 INCLUDES
47,48,49,50)

KEY 73 (WIRE SET)
NOT SHOWN

THREADED CONNECTOR
(KEY ITEM 63 INCLUDES 60,61,62)



RMOX OR RMAX STYLE
(OPTIONAL CABLE DISCONNECTS)



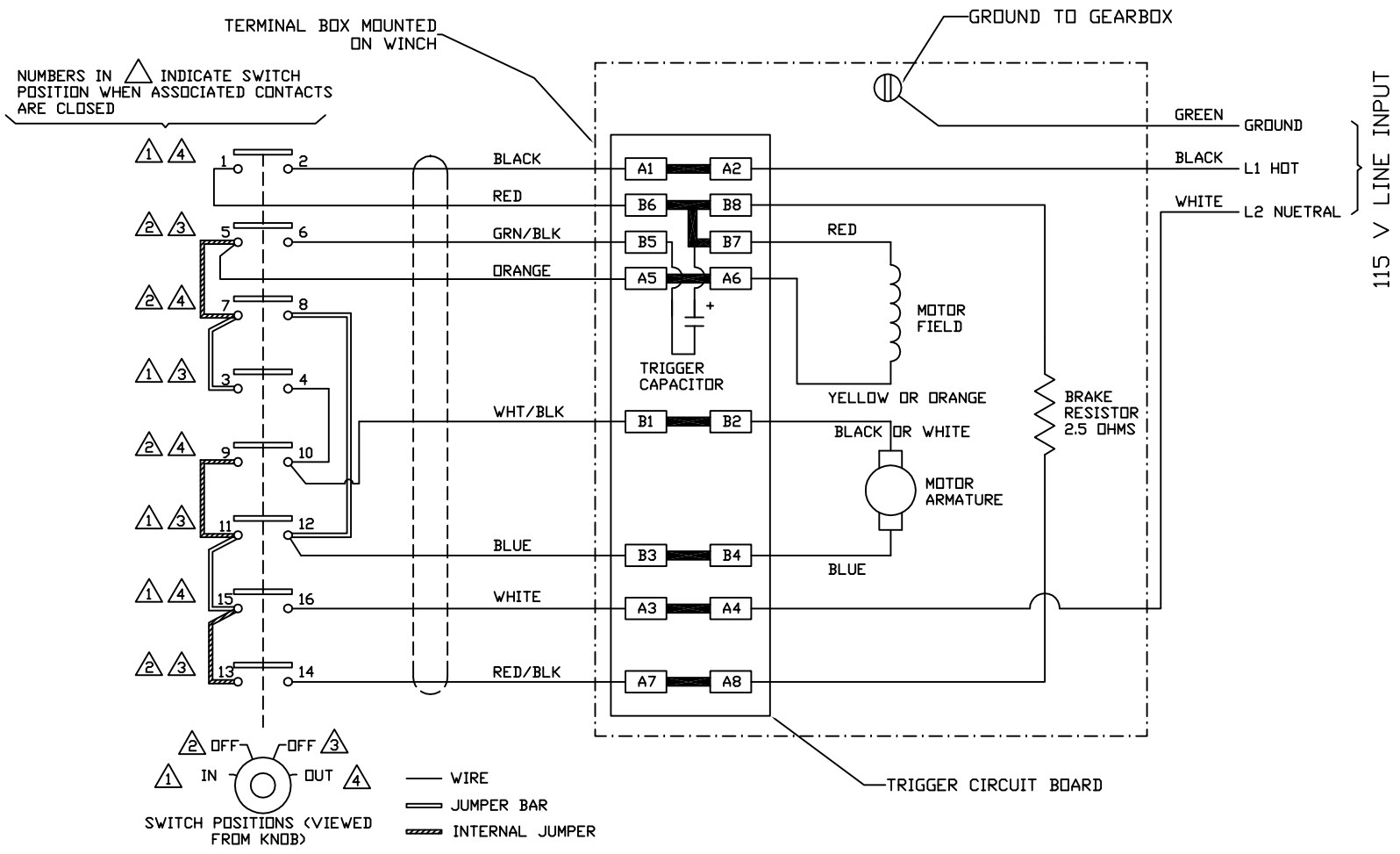
TERMINAL BOX ASSEMBLY (KEY 1 OR 2)
(COMMON TO ALL CONTROLS)

Electrical Parts List (Supplement to Maintenance Manual PB-12)

Key	Description	Qty	Part Number	Key	Description	Qty	Part Number
1	Assembly - Terminal Box, 115 V	1	100506	37	Cable - 14 Gauge, 8 Conductor (Feet)	10	100551
2	Assembly - Terminal Box, 230 V	1	100507	38	Assembly - Trigger Circuit	1	100552
3	Assembly - Pendant, RMA, w/cable	1	100508	39	Screw - Switch Mounting, M4 x 16mm	2	100553
4	Assembly - Pendant, RMO, w/cable	1	100509	40	Screw - Box Mounting, #10-24 x .62	4	100554
5	7-15 SMO Control Complete	1	100510	41	Screw - Cap Mounting, #6 x 3/4	2	100555
6	7-15 SMA Control Complete	1	100511	42	Screw - Cover Mounting, #6-32 x .62	6	100556
7	7-15 RMO Control Complete	1	100512	43	Bushing - Cable	2	100558
8	7-15 RMA Control Complete	1	100513	44	Nut - Cable, Plastic	2	100559
9	7-30 SMO Control Complete	1	100514	45	Screw - Switch Mounting, M4 x 10mm	2	100562
10	7-30 SMA Control Complete	1	100515	46	Assembly - Switch Knob (Kraus Naimer)	1	101088
11	7-30 RMO Control Complete	1	100516	47	Pin - QD, Crimp (Bayonet QD)	8	100591
12	7-30 RMA Control Complete	1	100517	48	Socket - QD (Bayonet QD)	8	100592
13	12-15 SMO Control Complete	1	100518	49	Plug - QD, (Bayonet QD)	1	100593
14	12-15 SMA Control Complete	1	100519	50	Receptacle - QD, (Bayonet QD)	1	100594
15	12-15 RMO Control Complete	1	100520	51	Screw - Switch Handle (See Note 1)	1	100599
16	12-15 RMA Control Complete	1	100521	52	Handle - Switch (See Note 1)	1	100602
17	12-30 SMO Control Complete	1	100522	53	Insert - Switch Handle (See Note 1)	1	100603
18	12-30 SMA Control Complete	1	100523	54	Assembly - Switch Knob (Salzar)	1	100570
19	12-30 RMO Control Complete	1	100524	55	Connector - QD (Bayonet)	1	100605
20	12-30 RMA Control Complete	1	100525	56	Shaft - Switch	1	100608
21	Switch - Momentary	1	100534	57	Collar - Shaft Mounting, Switch	1	100609
22	Switch - Maintained	1	100535	58	Screw - Pan Hd Phillips, #4-40 x 1/2	4	100688
23	Box - Terminal, w/100546 Plate	1	100536	59	Nut - Hex #4-40	4	100689
24	Cover - Box, SMO & SMA	1	100537	60	Connector - QD Recept. (Threaded)	1	100690
25	Cover - Box, RMO & RMA	1	100538	61	Connector - QD, Plug (Threaded)	1	100691
26	Cover - Box, Quick Disconnect	1	100539	62	Clamp - Cable (Threaded Type QD)	1	100692
27	Barrel - Switch, Remote Control	1	100540	63	Assembly - QD, Threaded Type	1	100693
28	Cap - Switch, Remote Control	1	100541	64	Label - Momentary Switch, In/Out	1	100705
29	Resistor - Braking, 115 Volt	1	100542	65	Label - Maintain Switch, In/Out	1	100706
30	Resistor - Braking, 230 Volt	1	100543	66	Label - Warning, 12-30 Series	1	100707
31	Clip - Spring, w/Insulator	1	100544	67	Label - Warning, 7-30 Series	1	100708
32	Plate - Heat Sink, Box	1	100546	68	Label - Warning, 12-15 Series	1	100709
33	Plate - Heat Sink, Cover	1	100547	69	Label - Warning, 7-15 Series	1	100710
34	Cord - Power, 115 Volt	1	100548	70	Box - Terminal (w/o Heat Sink Plate)	1	100905
35	Cord - Power, 230 Volt	1	100549	71	Grommet - Motor to Terminal Box	1	100929
36	Grommet - Power Cord	1	100550	72	Wire - Lead Set, SMO or SMA	1	100972
				73	Wire - Lead Set, Disconnect, 8 Pin	1	100996

Notes:

1) Specify if the switch is a Kraus and Naimer or Salzar.



REVISIONS	DESCRIPTION		DATE	
	DFTSMN	APPLV	DATE	
	REDRAWN ON CAD		5/00	
	REVERSED ARMATURE LEAD COLORS TO CIRCUIT BOARD		11/02	
	ADDED LIMIT SWITCH INFORMATION		09/06	
LETTER	A	B	C	
ECD				

-TOLERANCES-
UNLESS OTHERWISE NOTED
DIMENSIONS IN INCHES

FRACTIONS $\pm 1/64$
ONE PLACE $\pm .015$
TWO PLACES $\pm .010$
THREE PLCS $\pm .005$
ANGLES $\pm 1^\circ$

SURFACE FINISH 125
REMOVE ALL BURRS AND SHARP EDGES

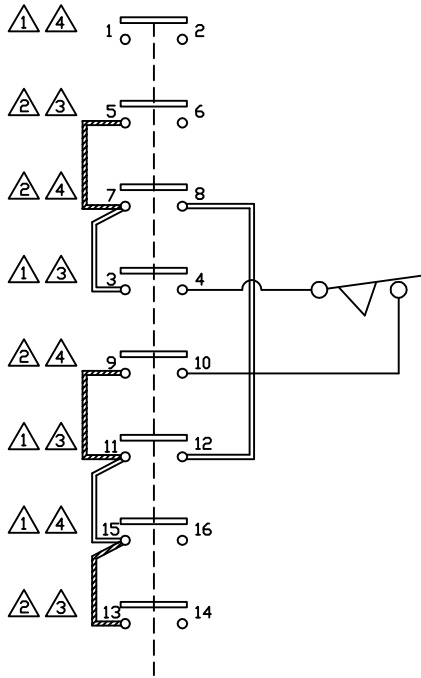
MATERIAL _____
FINISH _____

CORDEM Corporation
7860 Park Drive
Chanhassen, Minnesota 55317-9500

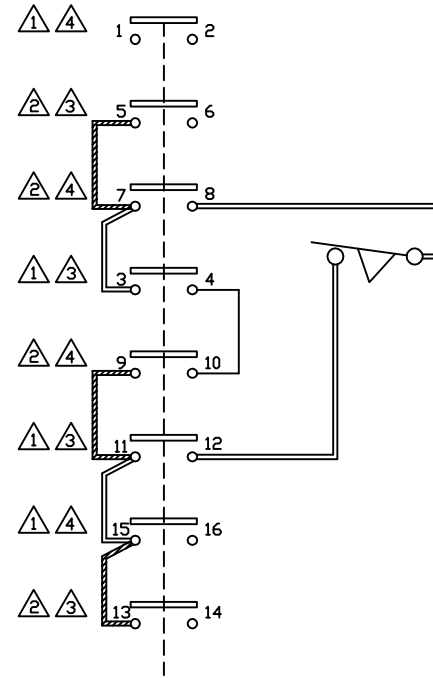
TITLE
**SCHEMATIC - 7/12-15
RMO CONTROL**

DFTM	DATE	SIZE	DRAWING NO.	REV.
GDS	5-4-87	D	101100	C
APPV'D	DATE	SCALE	SHEET 1 OF 3	
GDS	5-4-87			

LIMIT SWITCHES CAN BE USED TO BREAK THE POWER TO THE WINCH. DYNAMIC BRAKING WILL NOT OPERATE WHEN THE LIMIT SWITCHES ARE HIT. THIS IS USUALLY NOT A PROBLEM WHEN LIFTING A LOAD. LOWERING A LOAD WITHOUT DYNAMIC BRAKING OFTEN TIMES RESULTS IN THE LOAD DRIFTING. LIMIT SWITCHES SHOULD BE RATED FOR 25 AMPS AND 125 VAC.



To stop "IN" but with no brake, insert LS in place of jumper J4-10. Winch can still be run in "OUT" direction.



To stop "OUT" but with no brake, insert LS in place of jumper J8-12. Winch can still be run in "IN" direction.

REVISIONS	DESCRIPTION	DATE		5/00		11/02		<p style="text-align: center;">-TOLERANCES- UNLESS OTHERWISE NOTED DIMENSIONS IN INCHES</p> <p>FRACTIONS ±1/64 ONE PLACE ±.015 TWO PLACES ±.010 THREE PLCS ±.005 ANGLES ±1°</p> <p>MATERIAL _____</p> <p>FINISH _____</p>				<p>CORDEM® Corporation 7860 Park Drive Chanhassen, Minnesota 55317-9500</p>			
	DFTSMN	APPLY	DATE	RLM	RLM	RLM	RLM					SURFACE FINISH 125	TITLE		
	REDRAWN ON CAD	A	B	REVERSED ARMATURE LEAD COLORS TO CIRCUIT BOARD	SCHEMATIC - 7/12-15							RMO CONTROL			
LETTER	A		B		DATE		5-4-87		SIZE	DRAWING NO.		REV.			
ECD	GDS		GDS		DATE		5-4-87		SCALE	101100		C			
									SHEET 3 OF 3						